

TITLE: Alligator Chant

TYPE: Chant

SOURCE: Beth's Music Notes

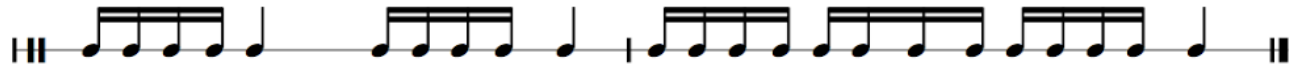
CATEGORY: Animal

# Alligator Chant

Beth Thompson



Al - li - ga - tor high, al - li - ga - tor low, al - li - ga - tor fast and then he's slow.



Al - li - ga - tor up, al - li - ga - tor down, al - li - ga - tor on the farm and al - so in the town.

bethsnotes.com



alligator high, alligator low, alligator fast and then he's slow.



alligator up, alligator down, alligator on the farm and also in the town.

TONE SET:

CSP:

ORIGIN: unknown

SCALE:

RHYTHMIC CONTENT:

MELODIC MOTIFS:

RHYTHMIC MOTIFS:

OVERALL FORM: AA'

RHYTHMIC FORM: AA'

USES  
1:  
2:  
3:

CONTEXT:   
CONTEXT:  
CONTEXT:

GRADE LEVEL(S): 2-3

OTHER: