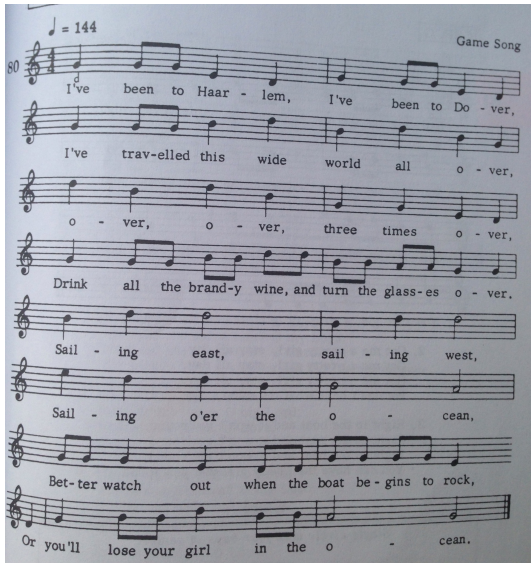


TITLE: Turn the Glasses Over	TYPE: Game song
SOURCE: 150 American Folk Songs	CATEGORY: Circle dance



4 4

d dd l, s, d dd l, s, d ddm s m s m d

s m s m d d l, s, d dd mmss mm rr d d

m s s m s s l s s m m r

dd d l, s, s, dddd l, s, s, d m s mm r d

Game: double circle, facing counter-clockwise, join hands with partner.
 M1-7 walk counterclockwise, M8 wring the dishrag.
 M9-14 inside circle walks clockwise
 M15-16 all claim new partners

TONE SET: s, l, d rm sl		CSP: G	ORIGIN: Traditional
SCALE: do pentatonic		RHYTHMIC CONTENT: ♪♪♪	
MELODIC MOTIFS: dl, s, /dms/mrd		RHYTHMIC MOTIFS: ♪♪♪ ♪♪♪ ♪♪♪	
OVERALL FORM: ABCA'		RHYTHMIC FORM: ABCD	
USES	1: so,	CONTEXT: l, s, d	
	2: ♪	CONTEXT: ♪♪♪ ♪♪♪ ♪♪♪	
	3:	CONTEXT:	
GRADE LEVEL(S): 2-3		OTHER:	